

Name: _____

Date: _____

FOURTH GRADE-SCIENCE (SCIENCE4_1)

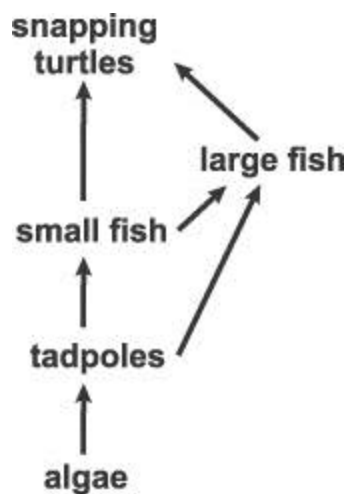
1. The BEST way to tell the difference between an oak and a maple tree is to compare
- A. their heights.
 - B. the number of leaves on the trees.
 - C. the size of the root systems of the trees.
 - D. the shape of the leaves.

2. There are 24 hours in a day. What would happen to the length of a day if Earth rotated more quickly?
- A. The length of a day would become shorter.
 - B. The length of a day would become longer.
 - C. The length of a day would remain the same.
 - D. The length of a day could not be predicted.

3. When light hits a dark object, most of the light is
- A. absorbed.
 - B. reflected.
 - C. diffused.
 - D. refracted.

4.

Use the diagram below of the food web in a pond community to answer this question.



If the number of small fish decreases, what MOST LIKELY will happen to the number of snapping turtles?

- A. It will increase.
 - B. It will decrease.
 - C. It will stay the same.
 - D. Snapping turtles will no longer exist.
-

5. Plants make their own food. When used this way, the word "food" means something that

- A. usually tastes good.
 - B. contains stored energy.
 - C. needs sunlight and carbon dioxide.
 - D. is eaten only by animals.
-

6. Which of the following CANNOT be recycled after it is used?

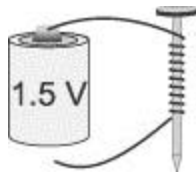
- A. newspaper
 - B. gasoline
 - C. glass bottle
 - D. aluminum can
-

7. A scientist has developed a material that conducts electricity with less heat loss than copper wiring. Information about this recent discovery would MOST LIKELY be found

- A. in an encyclopedia.
 - B. on a home-repair television show.
 - C. in a science textbook.
 - D. in a science reference magazine.
-

8.

Use the picture below to answer this question.



When the bottom wire is touched to the battery, the nail

- A. becomes electric.
 - B. gives you a shock.
 - C. glows red hot.
 - D. becomes magnetic.
-

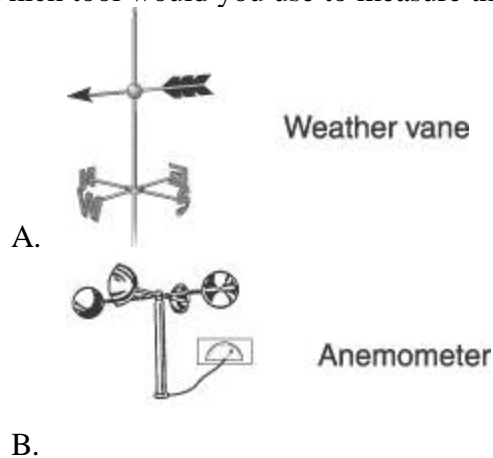
9. In a rain forest community, the energy that fuels the entire ecosystem comes from
- A. the rain.
 - B. the trees.
 - C. the insects.
 - D. the Sun.
-

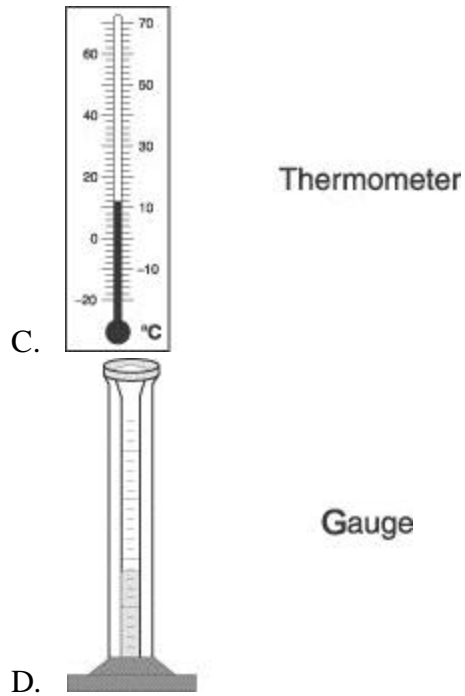
10. Kim is outdoors when an electrical storm begins. Where should Kim go to be safe during the storm?
- A. into a lake
 - B. into the house
 - C. under a tree
 - D. on a lawn
-

11. How do dewdrops form on a leaf?
- A. They are formed from melted frost.
 - B. They are formed from water vapor in the air.
 - C. They fall as melted snow and are caught on the leaf.
 - D. They fall like a light rain and are caught on the leaf.
-

12. Which instrument gives the MOST information about air pressure?
- A. barometer
 - B. rain gauge
 - C. thermometer
 - D. humidity meter
-

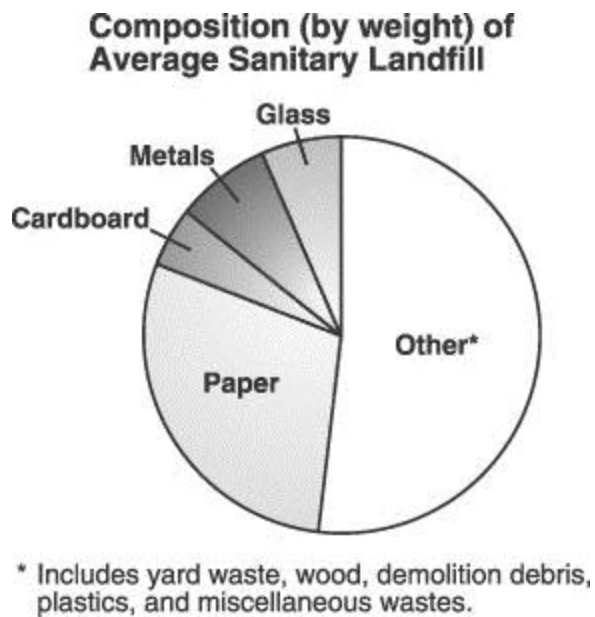
13. Which tool would you use to measure the amount of rain that falls in an area?





14.

Use the pie graph below to answer this question.



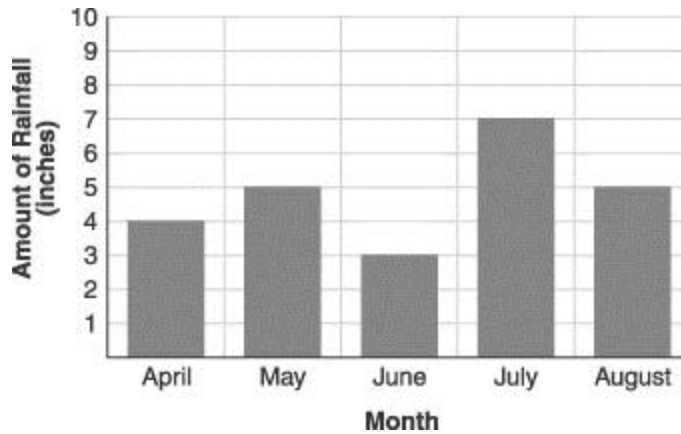
Based on the graph, slightly more than one-fourth of the trash in a landfill is

- A. paper.
- B. cardboard.
- C. metals and glass.

D. other wastes.

15.

Use the bar graph below to answer this question.



The bar graph shows the amount of rainfall for each month from April through August. In which two months was the rainfall the same?

- A. April and June
 - B. May and August
 - C. June and July
 - D. April and August
-

16. Which type of climate is MOST common between the equator (0°) and the tropic of Cancer (20° N)?

- A. cold and humid
 - B. temperate
 - C. tropical
 - D. polar
-

17. A producer is a living thing that makes its own food from sunlight. Which of the following is a producer?

- A. human
 - B. bee
 - C. cow
 - D. corn plant
-

18. Which instrument is used to measure air pressure?

- A. thermometer
- B. barometer
- C. anemometer

D. hygrometer

19. The role of the producer in any community is to

- A. produce space.
 - B. produce nutrients.
 - C. produce carbon dioxide.
 - D. produce food.
-

20.

Use the list below to answer this question.

- plastic
- rubber
- glass
- paper

Which name applies to these materials because of their electrical properties?

- A. connectors
 - B. regulators
 - C. conductors
 - D. insulators
-

21. The percent of children suffering from asthma and other lung diseases in large industrial cities is usually greater than in rural areas. What is one possible reason for this?

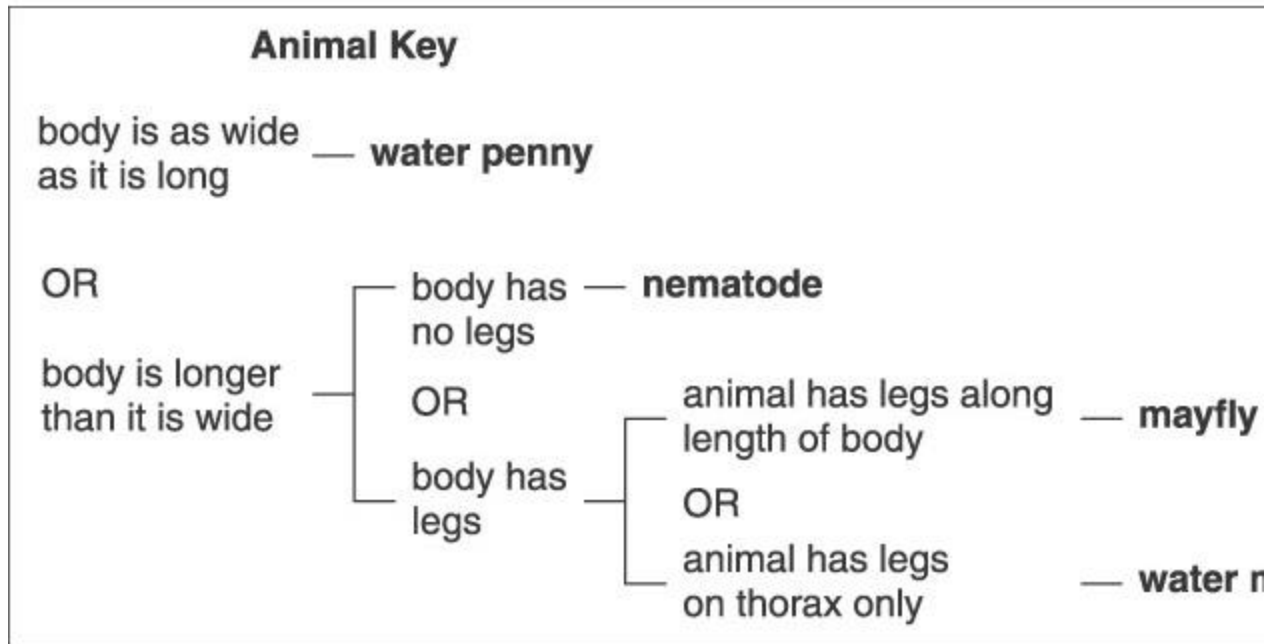
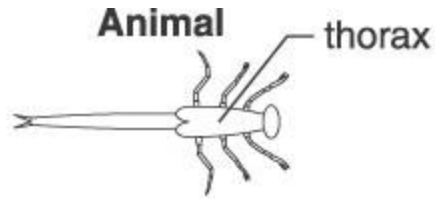
- A. water pollution
 - B. too much walking
 - C. too little green space
 - D. air pollution
-

22. The plastic coating around an electric cord is used to

- A. help the electricity move through the wires.
 - B. stop the electricity from shocking you.
 - C. cover the wires so the cord looks pretty.
 - D. use less wire so the cord costs less.
-

23.

Use the picture and the information below to answer this question.



Based on the Animal Key, the animal pictured is a

- A. water moth larva.
- B. nematode.
- C. mayfly nymph.
- D. water penny.

24. Which affects the direction a compass needle is pointing?

- A. the direction the person holding the compass is facing
- B. the direction of Earth's magnetic field
- C. the direction the person holding the compass wants to go
- D. the direction the wind is blowing

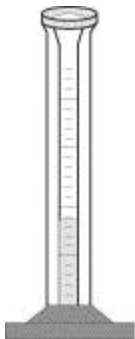
25. Wind speed can be measured using

- A. an anemometer.
- B. a thermometer.
- C. a barometer.
- D. a spectrometer.

FOURTH GRADE-SCIENCE(SCIENCE4_1)

(Answer Key)

1. the shape of the leaves.
2. The length of a day would become shorter.
3. absorbed.
4. It will decrease.
5. contains stored energy.
6. gasoline
7. in a science reference magazine.
8. becomes magnetic.
9. the Sun.
10. into the house
11. They are formed from water vapor in the air.
12. barometer
- 13.



Gauge

14. paper.
15. May and August
16. tropical
17. corn plant
18. barometer
19. produce food.
20. insulators
21. air pollution
22. stop the electricity from shocking you.
23. water moth larva.
24. the direction of Earth's magnetic field
25. an anemometer.

