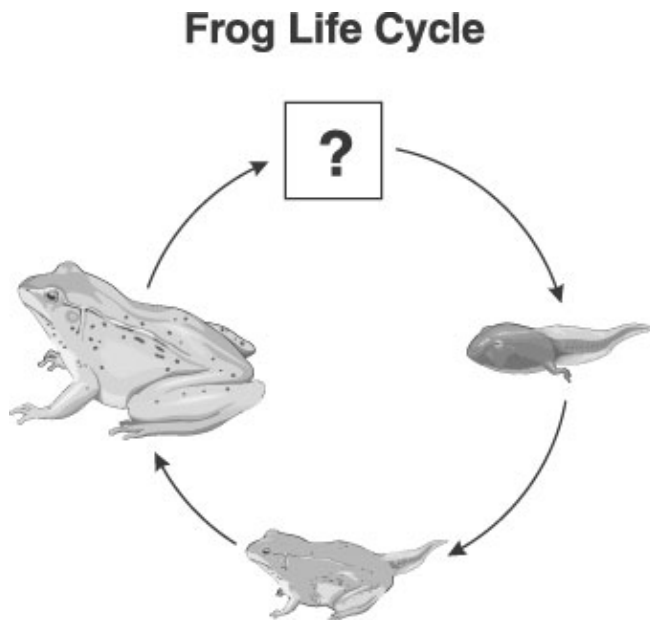


Name: _____ Date: _____

THIRD GRADE – SCIENCE (SCIENCE3_3)

1.

Use the picture below to answer this question.







Which is missing in the frog life cycle?

- A. pupa
- B. egg
- C. larva
- D. adult

2. Why do children in the same family sometimes look alike?

- A. They eat the same foods.
- B. They do the same things.
- C. They are made of the same types of cells.
- D. They inherited their looks from their parents.

3. Which is a living thing?

- A. 
- B. 
- C. 
- D. 

4. In the beginning, your body grew from

- A. 1 cell.
- B. 10 cells.
- C. 100 cells.
- D. thousands of cells.

5. Leticia has an orchard with pear, maple, and oak trees. She planted an apple seed in her orchard. Which type of tree will Leticia's seed become?

- A. pear
- B. maple
- C. oak
- D. apple

6. Which describes the size of a plant cell?

- A. much smaller than the head of a pin
- B. about the size of the head of a pin
- C. about the size of a pencil eraser
- D. about the size of a dime

7. Most flowers will grow in the direction of

- A. the ground.
 - B. water.
 - C. the wind.
 - D. sunlight.
-

8.

Use the picture below to answer this question.



Which could be the parent of this kitten?

A.



B.



C.



D.



9. Sally teaches her cat to do a trick. The cat then has four kittens. How many kittens are likely to be born knowing how to do the trick?

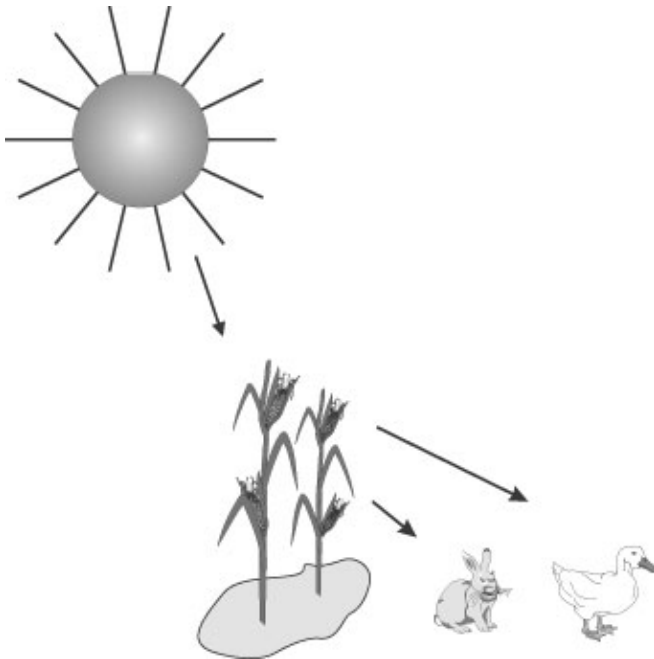
- A. 4
 - B. 2
 - C. 1
 - D. 0
-

10. Which shows that a fish is taking in air?

- A. Its tail moves back and forth.
 - B. It swims to the top of the water and back down.
 - C. Its gill covering opens and shuts as it swims.
 - D. It sucks sand in its mouth and spits it out.
-

11.

Use the picture below to answer this question.



Which tells the scientific idea shown in the picture?

- A. Rabbits and ducks like to live together.
- B. Plants provide light and food for animals.
- C. The Sun's light makes the rabbit and duck healthy.
- D. The Sun's light is used by plants to make food for rabbits and ducks.

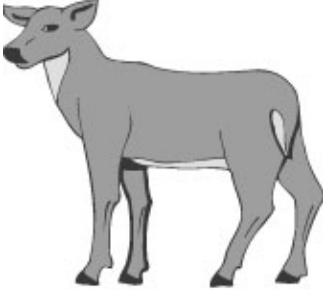
12. Which of these mothers has a baby that grows inside her?

A.



Chicken

B.



Deer

C.



Snake

D.



Butterfly

13. Which picture below shows where puppies come from?

A.



B.



C.



D.

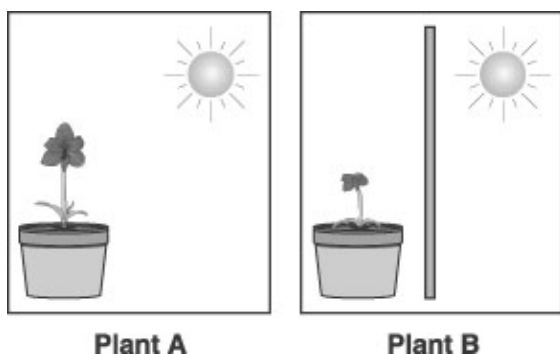


14. Baby animals inherit traits from their parents. They are MOST LIKELY to

- A. hunt differently.
- B. try to find new kinds of food.
- C. look like their parents.
- D. move to a different environment.

15.

Use the pictures below to answer this question.



This experiment shows that plants need

- A. fertilizer.
- B. soil.
- C. sunlight.
- D. water.

16.

Use the pictures below to answer this question.



All of these living things

- A. are types of animals.
- B. are made up of cells.
- C. make seeds.
- D. eat bugs.

17. Which statement BEST tells why snakes lie in the sun?

- A. Snakes are afraid of cold, dark places.
- B. Snakes can only find food in the dark.
- C. Snakes use the Sun's light rays to make food.
- D. Snakes need heat from the Sun to stay warm.

18. Which are living organisms?

- A. snails in a pond
 - B. rocks in a garden
 - C. shells on a beach
 - D. wood in a chair
-

19. Most of the cells in our body

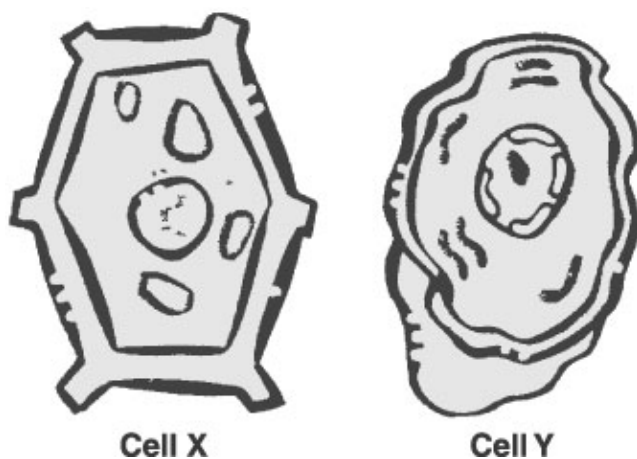
- A. can make new cells.
 - B. have cell walls.
 - C. make their own food.
 - D. are the same shape.
-

20. Which baby animal before it is an adult looks MOST like its parents?

- A. a butterfly
 - B. a dog
 - C. a frog
 - D. a fly
-

21.

Use the pictures below to answer this question.



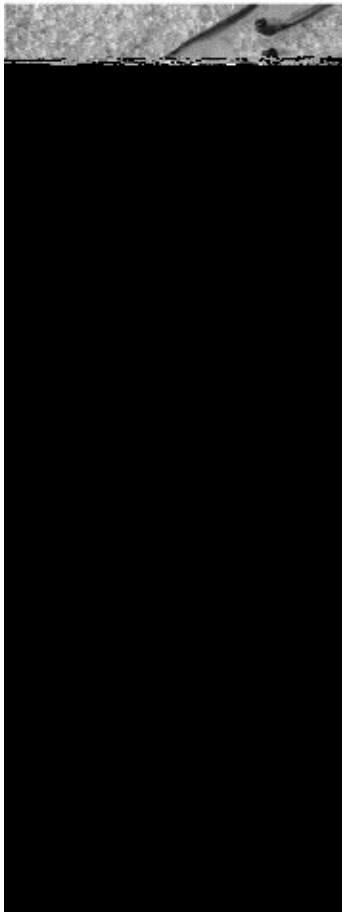
Which shows that Cell X is a plant cell?

- A. the size of the cell
- B. the size of the nucleus
- C. the straight, thick, cell walls
- D. the shaded material filling the cell

22. The pictures below show stages in the life cycle of a fish. The pictures are not in correct order.



A



How should you arrange these pictures to show the life cycle of a fish?

- A. D, B, A, C
- B. D, C, A, B
- C. D, B, C, A
- D. D, A, B, C

23. Which statement is TRUE about what an animal does when it gets cold in the evening?

- A. A horse sweats more.
- B. A dog pants harder.
- C. A lizard lies still on a rock.
- D. A cat shivers.

24. A plant cell is different from an animal cell because the plant cell can

- A. grow taller.
- B. move from place to place.
- C. make new cells.
- D. make food.

25. Alice plants two seeds from the same plant. She uses different soil. When the seeds grow up, they will have the same

- A. height.
- B. number of leaves.
- C. number of flowers.
- D. leaf shapes.

Copyright (c) 2002 by The Riverside Publishing Company. All Rights Reserved.

THIRD GRADE – SCIENCE(SCIENCE3_3)

(Answer Key)

1. egg
2. They inherited their looks from their parents.

3.

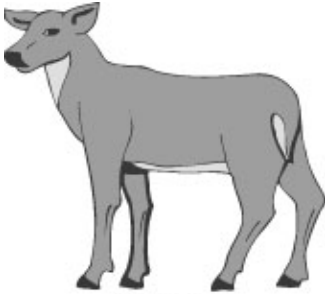


4. 1 cell.
5. apple
6. much smaller than the head of a pin
7. sunlight.

8.



9. 0
10. Its gill covering opens and shuts as it swims.
11. The Sun's light is used by plants to make food for rabbits and ducks.
- 12.



Deer

13.



14. look like their parents.
15. sunlight.
16. are made up of cells.
17. Snakes need heat from the Sun to stay warm.
18. snails in a pond
19. can make new cells.
20. a dog

21. the straight, thick, cell walls
22. D, B, C, A
23. A cat shivers.
24. make food.
25. leaf shapes.